

# Technical Bulletin



Model(s)	Year	Eng. Code	Trans. Code	VIN Range From	VIN Range To
Jetta (A5)	2005 - 2007	All	All EXCEPT 6 Speed Manual	All	All
Passat, Passat Wagon	2006 - 2007	All	All EXCEPT 6 Speed Manual	All	All
Rabbit, GTI	2006 - 2007	All	All EXCEPT 6 Speed Manual	All	All
Eos	2007	All	All EXCEPT 6 Speed Manual	All	All

## Condition

37 07 18 August 23, 2007 2015979

### Transmission, Knocking Noise Under Load

Knocking noises at load change from pendulum support.



#### Tip:

If vehicle is equipped with 6 speed manual transmission (MQ350), see Technical bulletin Instance number 2015981 in ElsaWeb.

## Technical Background

Connection between pendulum support and gearbox may be loose.

Engine vibrations affect the connection and may loosen the bolts.

## Production Solution

No production change required.

# Technical Bulletin



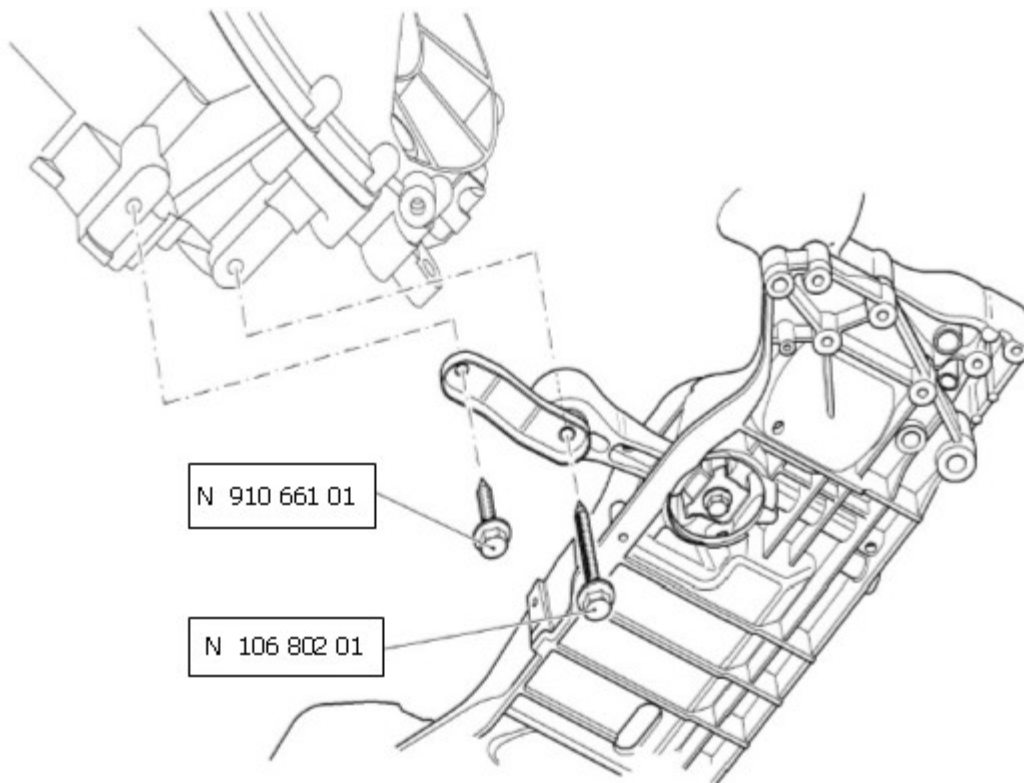
## Service

1. Check pendulum support bolts.
2. If bolts are loose:
  - a. Remove bolts.
  - b. Discard original bolts.
  - c. Install pendulum support and secure with new bolts listed below.
    - M10x35 (N91066101)
    - M10x75 (N10680201)



### Note:

Contrary to the repair manual use following torque:  
Tighten bolts to 50 Nm (37 ft. lbs.) plus 90°.



# Technical Bulletin



## Warranty

When procedure applies to vehicles within the New Vehicle Limited Warranty, use the following:	
Claim Type:	W2
Part Identifier: Manual Transmission	3435
Damage Code:	3435 18 _ _ _ * 1
Labor Operation:	34355599 = 50 TU
Part Identifier: Automatic Transmission	3735
Damage Code:	3735 18 _ _ _ * 1
Labor Operation:	37355599 = 50 TU
Diagnostic Time:	No Additional Diagnostic Time Allowed
Claim Comment: Type "As per Technical Bulletin 2015979" in comment section of Warranty Claim.	

## Required Parts and Tools

Description	Part No:	Quantity
Bolt M10x35 10.9	N 91066101	1
Bolt M10x75 10.9	N 10680201	1

No special tools required.

## Additional Information

All part and service references provided in this Technical Bulletin are subject to change and/or removal. Always check with your Parts Dept. and Repair Manuals for the latest information.